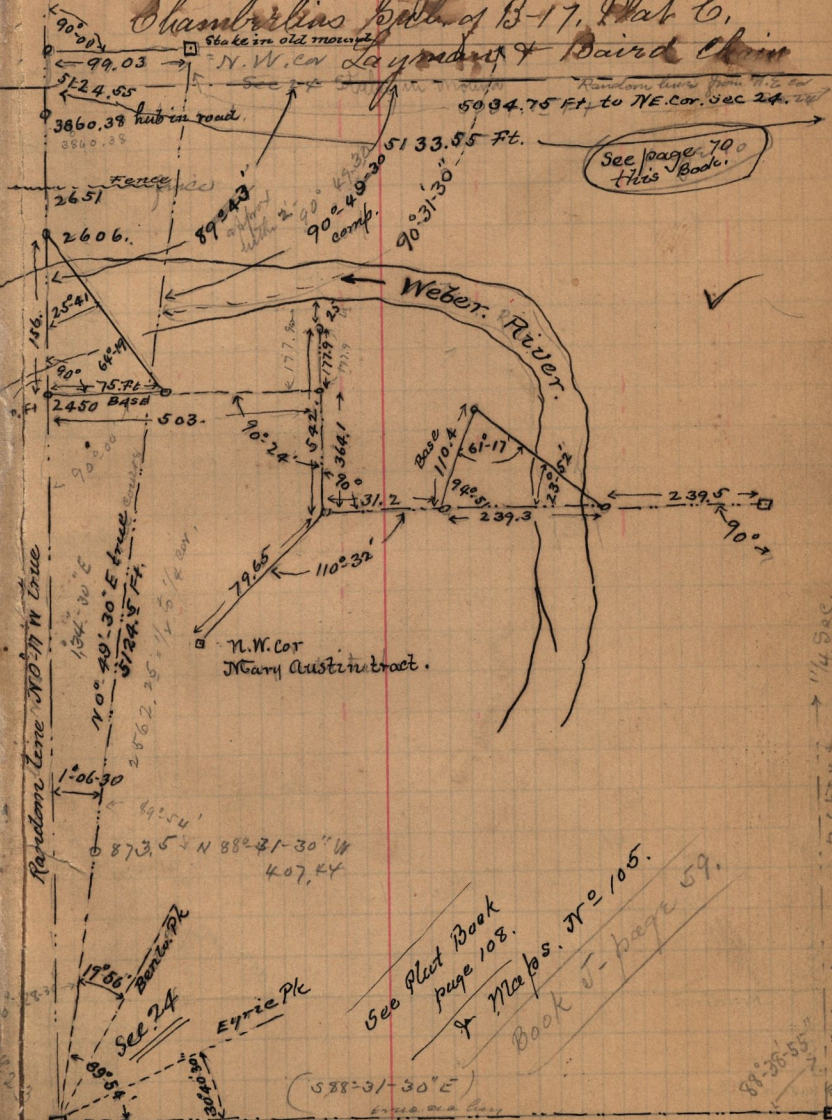


See Book D, p. 9, 92
for line north.

5

Nov 24 Surveyed L-10-B1-

Chambelias part of B-17, Plat C,
N.W. cor Layman & Baird claim



See page 70
this Book.

See Plat Book
page 108.
& Maps. N° 106.
Book J - page 59.

S.W. Cor; Sec 24
T. 6. N. R. 2. W.
Stake. Burnt.
(See Book H page)

1588° 16' 30" E true course
2647.64 Ft. measured
Ap-16-1891 - (Ross tape)

588-31-30° E
588-07-35
Eyrle Plk